

Word of the Day

Autumn Term 2024

Week 9 – 4th November 2024



'Words unlock the doors to a world of understanding...'

This Week's Words

Grasshopper

scratch

wrong

guest

strong

weak

Shinobi

vivid

abundant

vulnerable

subdue

obnoxious



VOCABULARY NINJA

Grasshopper (Tier 1)

scratch

wrong

guest

strong

weak



VOCABULARY NINJA

Shinobi (Tier 2)

vivid

abundant

vulnerable

subdue

obnoxious



VOCABULARY NINJA



Grasshopper Word of the Day

Word of the Day:

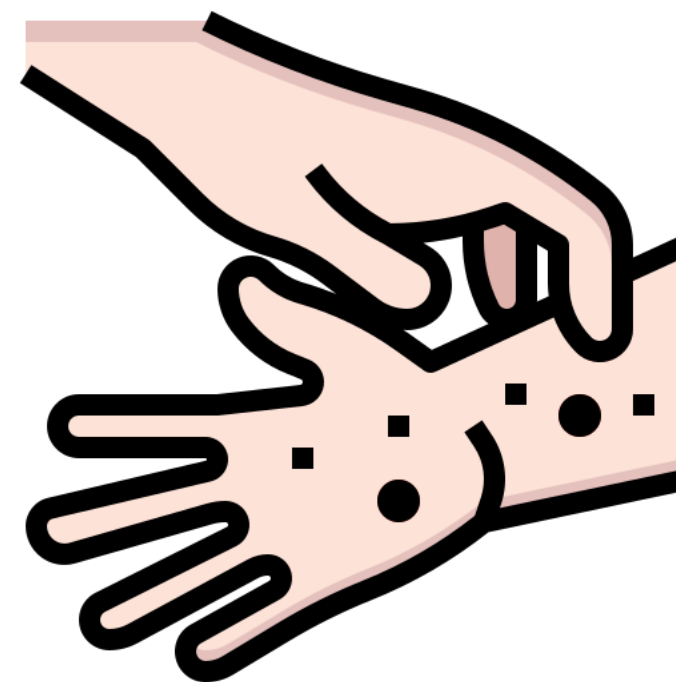
scratch
(scratch)

Word Class
(verb / noun)

Pronunciation / Syllables

Definition:

If a sharp object scratches some or something, it makes small shallow cuts on their skin or surface.



Ellie needed to **scratch** her arm as it was itchy.

Synonym:

claw

scrape

Antonym:

mend

heal

Prefix / Suffix:

-y

-ed

Rhyme:

catch

hatch

Link Word:

lightly

aggressively



Grasshopper Word of the Day

Word of the Day:

Pronunciation / Syllables

wrong
(*wrong*)

Word Class
(adjective)

Definition:

If you say there is something wrong, you mean there is something unsatisfactory about the situation, person, or thing you are talking about.



Shaz got the answer to the question **wrong**.

Synonym:

incorrect

mistaken

Antonym:

accurate

precise

Prefix / Suffix:

-ly

-ful

Rhyme:

long

strong

Link Word:

completely

clearly



Grasshopper Word of the Day

Word of the Day:

Pronunciation / Syllables

guest
(guest)

Word Class
(noun)

Definition:

A guest is someone who is visiting you or is at an event because you have invited them.



The class welcomed a **guest** speaker to discuss SATs.

Synonym:

client

tenant

Antonym:

manager

owner

Prefix / Suffix:

house-

-s

Rhyme:

best

rest

Link Word:

special

honoured



Grasshopper Word of the Day

Word of the Day:

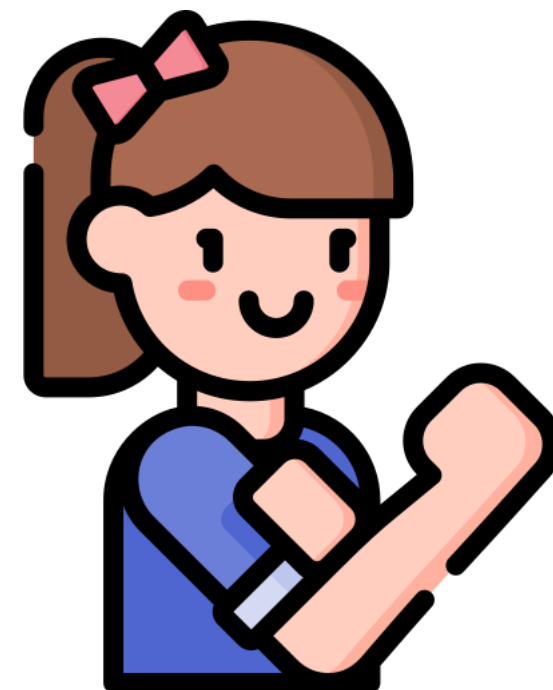
Pronunciation / Syllables

strong
(strong)

Word Class
(adjective)

Definition:

Someone who is strong is healthy with good muscles and can move or carry heavy things, or do hard physical work.



Patty showed she was **strong** in PE.

Synonym:

powerful

mighty

Antonym:

weak

fragile

Prefix / Suffix:

-est

-er

Rhyme:

long

wrong

Link Word:

physically

incredibly



Grasshopper Word of the Day

Word of the Day:

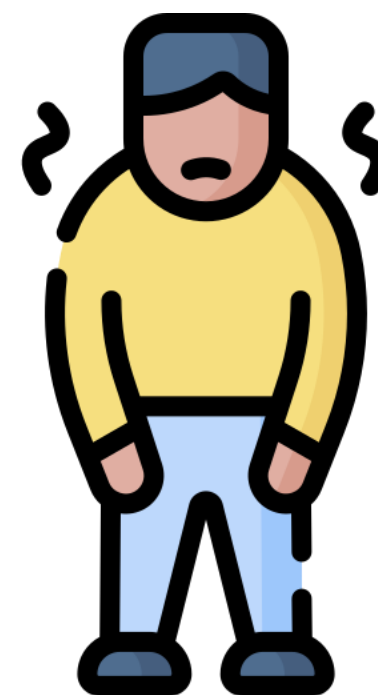
Pronunciation / Syllables

weak
(weak)

Word Class
(adjective)

Definition:

If someone is weak, they are not healthy or do not have good muscles, so that they cannot move quickly or carry heavy things.



Mrs Basu was **weak** after having the flu.

Synonym:

feeble

fragile

Antonym:

healthy

powerful

Prefix / Suffix:

-ness

-er

Rhyme:

speak

seek

Link Word:

visibly

appear



Shinobi Word of the Day

Word of the Day:

Pronunciation / Syllables

vivid
(viv-id)

Word Class
(adjective)

Definition:

If you describe memories and descriptions as vivid, you mean that they are very clear and detailed.



Mr Peck gave **vivid** examples to to explain the story.

Synonym:

lucid

rich

Antonym:

bland

dull

Prefix / Suffix:

-ly

-ness

Rhyme:

Link Word:

incredibly

strikingly



Shinobi Word of the Day

Word of the Day:

abundant
(a-bun-dant)

Word Class
(adjective)

Pronunciation / Syllables

Definition:

Something that is abundant is present in large quantities.



The resources were **abundant** in the classroom.

Synonym:

ample

rich

Antonym:

insufficient

lacking

Prefix / Suffix:

over-

-ly

Rhyme:

Link Word:

provide

naturally



Shinobi Word of the Day

Word of the Day: **vulnerable**

Word Class
(adjective)

Pronunciation / Syllables

(*vul-ner-a-ble*)

Definition:

Someone who is vulnerable is weak and without protection, with the result that they are easily hurt physically or emotionally.



Charlie from the story was vulnerable.

Synonym:

sensitive
accessible

Antonym:

safe
protected

Prefix / Suffix:

in-

Rhyme:

Link Word:

emotionally
remain



Shinobi Word of the Day

Word Class
(verb)

Word of the Day:

subdue
(sub-due)

Pronunciation / Syllables

Definition:

To subdue feelings means to make them less strong.



Mrs Thomas tried to **subdue** her nerves before speaking.

Synonym:

humble

suppress

Antonym:

encourage

release

Prefix / Suffix:

-ed

-s

Rhyme:

you

through

Link Word:

calmy

gently



Shinobi Word of the Day

Word of the Day:

obnoxious
(*ob-nox-ious*)

Word Class
(adjective)

Pronunciation / Syllables

Definition:

If you describe someone as obnoxious, you think that they are very unpleasant.



There were too many **obnoxious** noises in the classroom.

Synonym:

annoying
loathsome

Antonym:

good
pleasant

Prefix / Suffix

-ly
-ness

Rhyme:

Link Word:

extremely
utterly

Vocabulary Laboratory



Describe / Definition:

Use it in a sentence:

Focus Word (write below):

Word Class:

Synonyms:

(words with same / similar meaning)

Antonyms:

(words with opposite meaning)

Draw your sentence:

Rhymes:

(words that sound the same)

Link Words:

(Example: football = pitch, team, player)

Vocabulary Visualiser

Draw the
Grasshopper words
and bring them to life.



Word: scratch

Word: strong

Word: guest

Word: weak



Vocabulary Visualiser

Draw the **Shinobi**
words and bring
them to life.



Word: vivid

Word: subdue

Word: abundant

Word: obnoxious



Matching Meanings

Draw lines from the **Grasshopper** words to their definitions.



Grasshopper Word

Grasshopper Definitions

scratch

If you say there is something ***, you mean there is something unsatisfactory about the situation, person, or thing you are talking about.

Matching Meanings

Draw lines from the **Shinobi** words to their definitions.



Shinobi Word

Shinobi Definitions

vivid

Someone who is *** is weak and without protection, with the result that they are easily hurt physically or emotionally.



abundant

Something that is *** is present in large quantities.



vulnerable

To *** feelings means to make them less strong.



subdue

If you describe someone as ***, you think that they are very unpleasant.



obnoxious

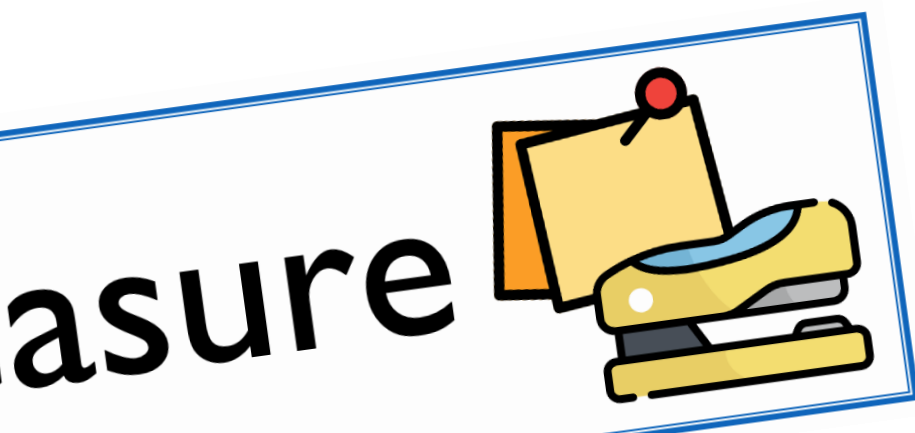
If you describe memories and descriptions as ***, you mean that they are very clear and detailed.





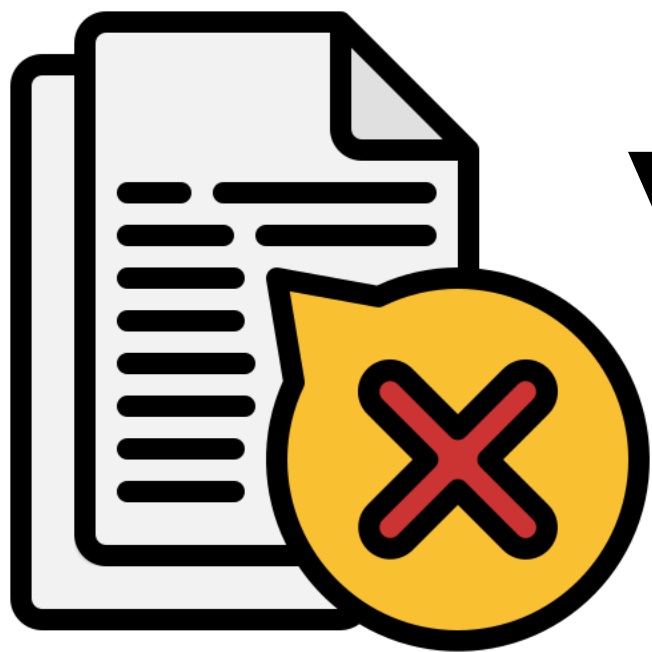
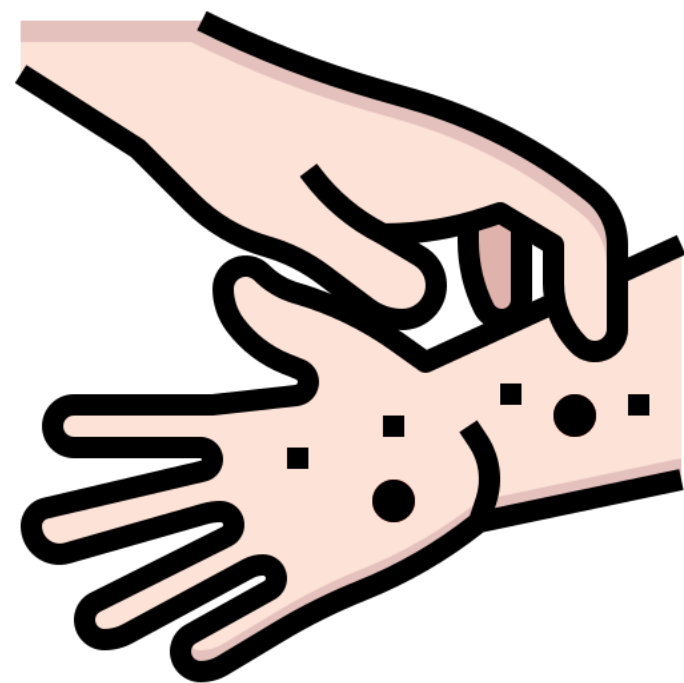
Display Slips

The following slides are for classroom display. As you teach each Word of the Day, words can be displayed in the classroom to enable pupils to use the taught vocabulary in an independent manner.





scratch

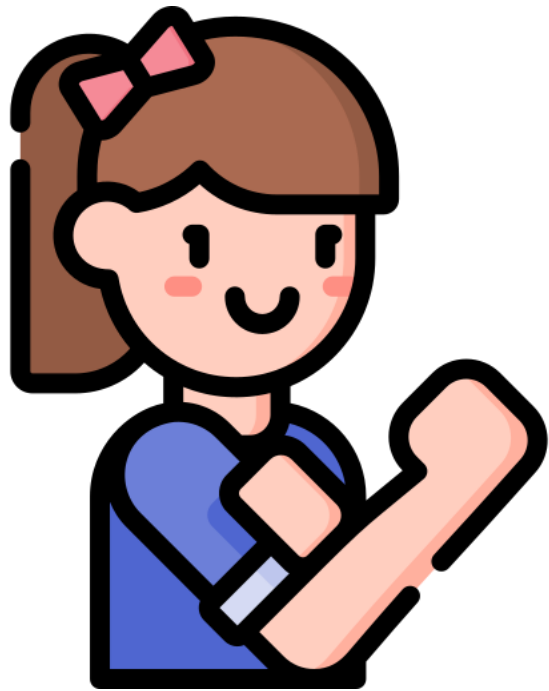


wrong





guest

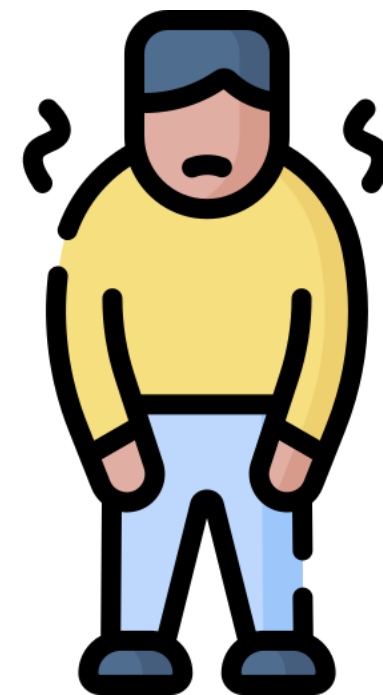


strong





weak



vivid





abundant



vulnerable





subdue



obnoxious





Font Variation

The following display slips contain the same words, but have a more regular font, which have a more regular formation of 'a' and 'g'. Futura is the name of the font.




worried



opini

asure

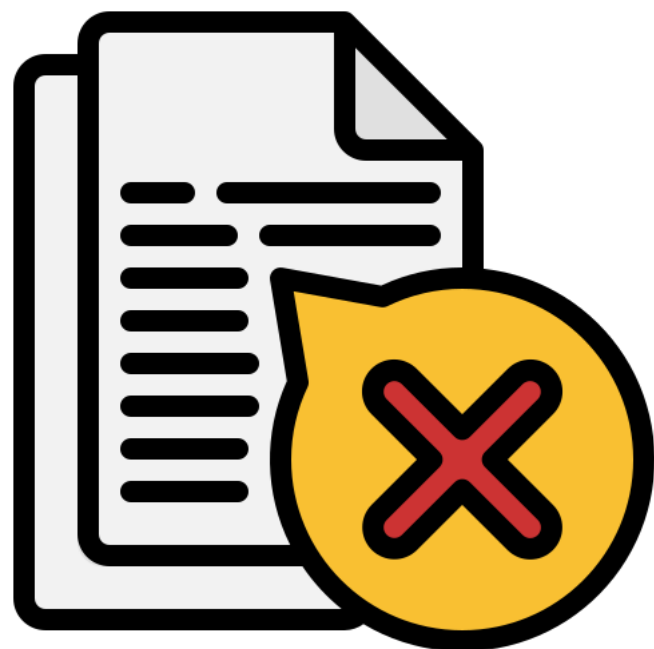
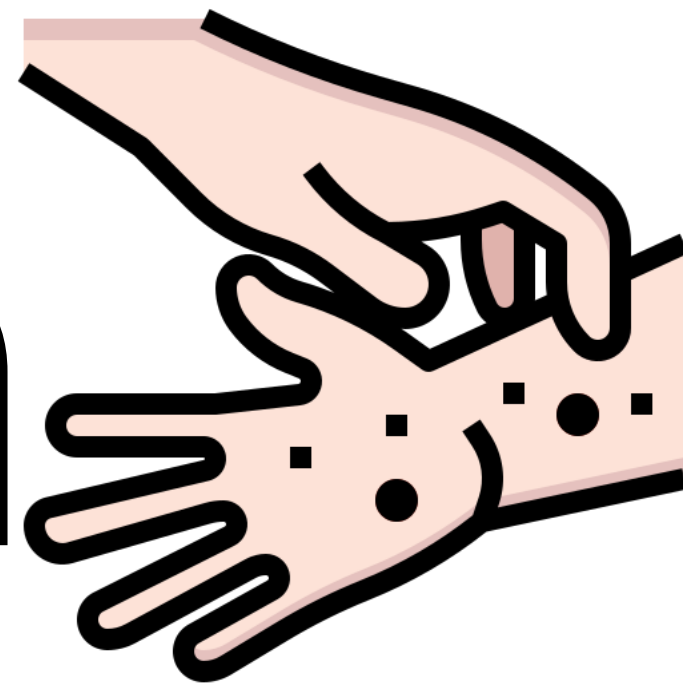


dia





scratch

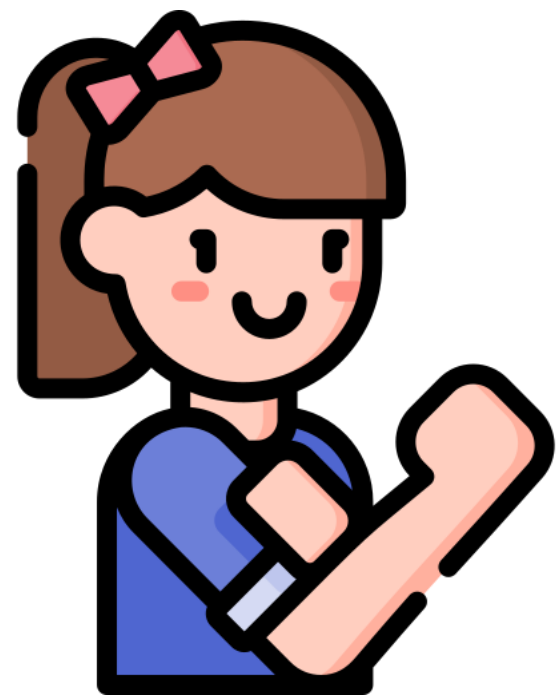


wrong





guest

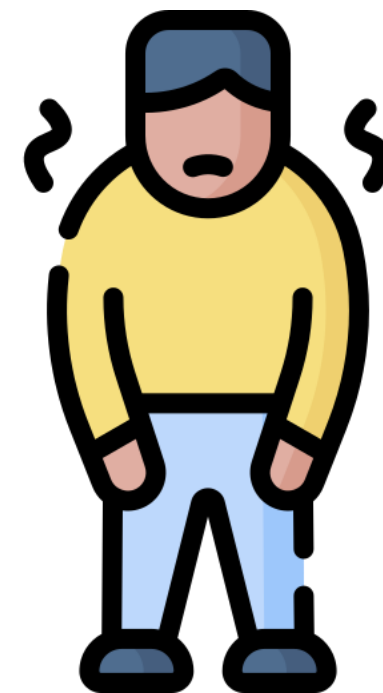


strong





weak



vivid





abundant



vulnerable





subdue



obnoxious

